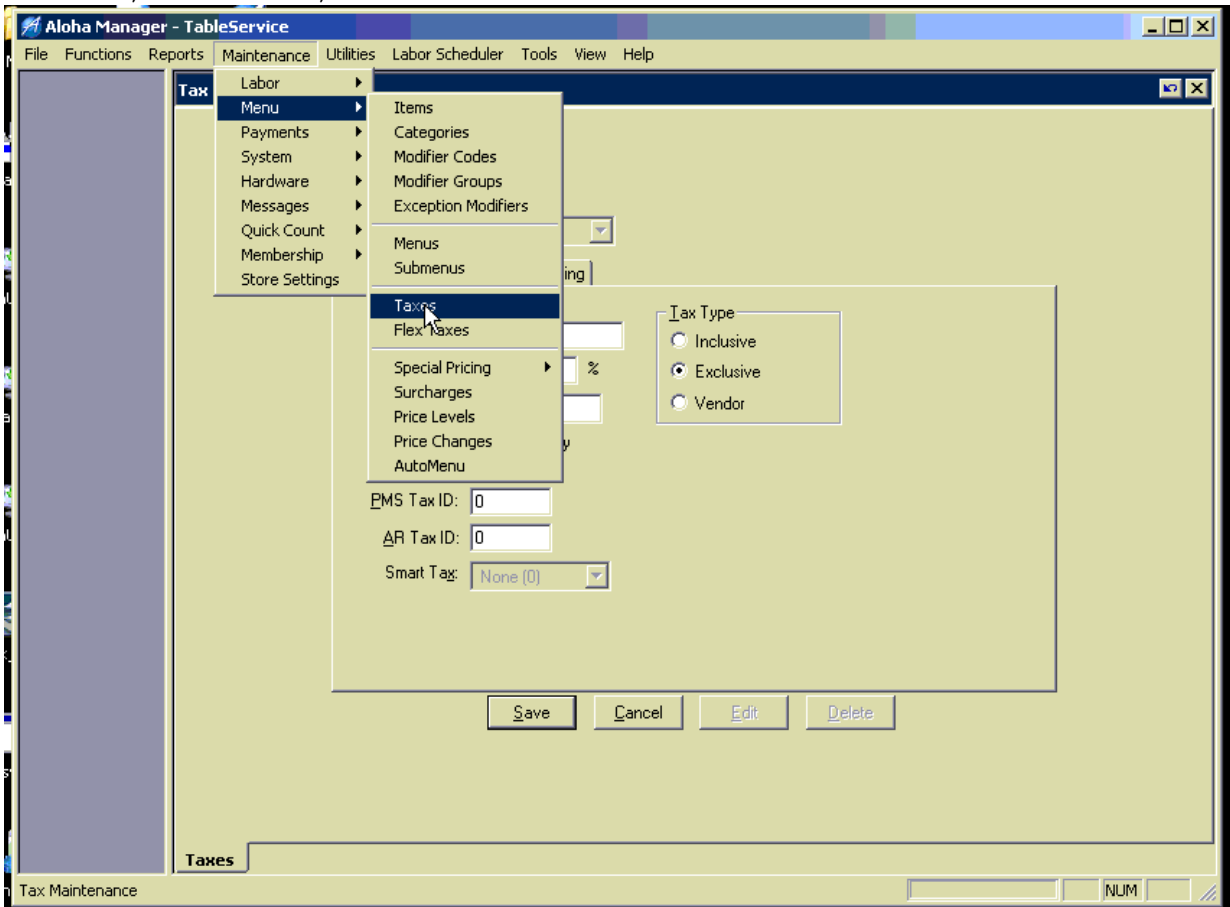


How to Change Sales Tax Percentage in Aloha

- 1.) Due to possible Trans.log corruption, it is advised to make changes prior to opening or after closing and let End of Day push down the changes.
- 2.) Log into Aloha Manager
- 3.) Under maintenance, select menu, and then taxes.



- 4.) For all Tax IDs that require changing, enter the new tax rate in the tax rate window and **SAVE** when you are done.

